

# HOW TO LET'S GET LOST

## CLUB COUTURE™ PROJECT



RELEASED JULY 2020

### Supplies Needed

**Club Couture™ Transfer:** Let's Get Lost

**Chalkology™ Paste Singles:** Sage, Storm, Morning Sky

**Tools:** Mini Squeegee (3), Transfer Trimmers, Placement Tape, Self-Healing Mat, Color Trays, and Fuzzing Cloth

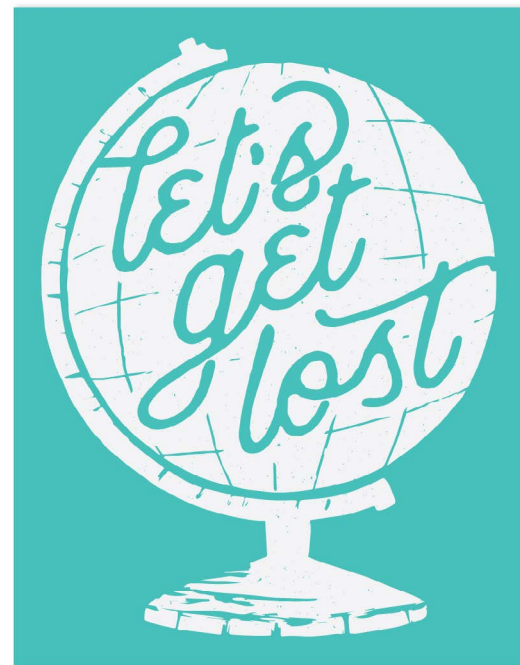
**Surface:** Pallet Board (9" x 12")

### Color and Placement for Club Couture™

1. *Globe:* Sage and Morning Sky
2. *Stand:* Storm

### Follow these instructions to complete the Club Couture™ project:

1. Prepare your Chalk Transfer™ by removing it from the packaging.
2. When you remove the backer from the Transfer screen, be sure to "fuzz" it to gentle the adhesive by sticking the adhesive screen to a Fuzzing Cloth or terry cloth towel to pick up a bit of lint before applying it to your board.
3. Position the Transfer and smooth to adhere to your surface, ensuring there are no bubbles.
4. Block off the "globe" portion of your design with Placement Tape.
5. Prepare your Chalkology™ Paste by kneading the packet, trimming off the corner, and squeezing the desired amount onto one of your Color Trays or another palette surface. Stir paste if using 3 US fl. oz. jar.
6. Use two Mini Squeegees to dab generous amounts of Sage and Morning Sky Chalkology™ Paste on random areas around the globe (see color and placement suggestions).
7. Use the squeegee to blend and smudge the edges of the two colors together as desired.
8. Scrape off excess paste and discard. The more excess paste you remove, the better the result.
9. Use the "chalk-and-pull" method to carefully pull back the top part of the Transfer (with wet paste) before it dries. Carefully lay the Transfer back down on your surface.



JULY CLUB COUTURE™ TRANSFER:  
LET'S GET LOST

10. Remove the Placement Tape.
11. Smooth Storm Chalkology™ Paste over the stand element, avoiding the freshly chalked globe.
12. Slowly peel back the Transfer before the paste dries and immediately put it in water to clean thoroughly.
13. Once clean, let dry with the sticky side up.
14. Once all the Transfer elements are clean and dry, reapply all backers and store flat.